

系統名 : B10.D2/nSnSlc H2^d

特徴・用途

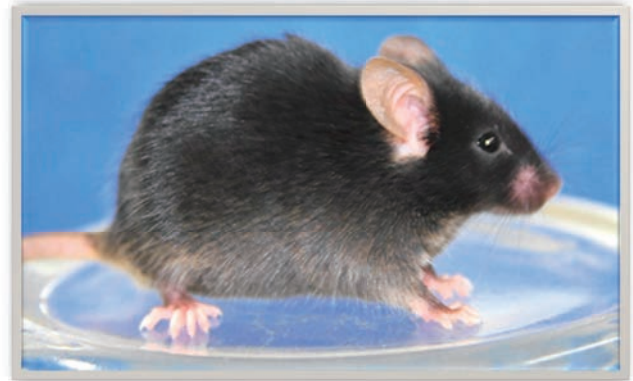
B10コンジェニック系統

毛色

黒色 (aaBBCC)

H2ハプロタイプ

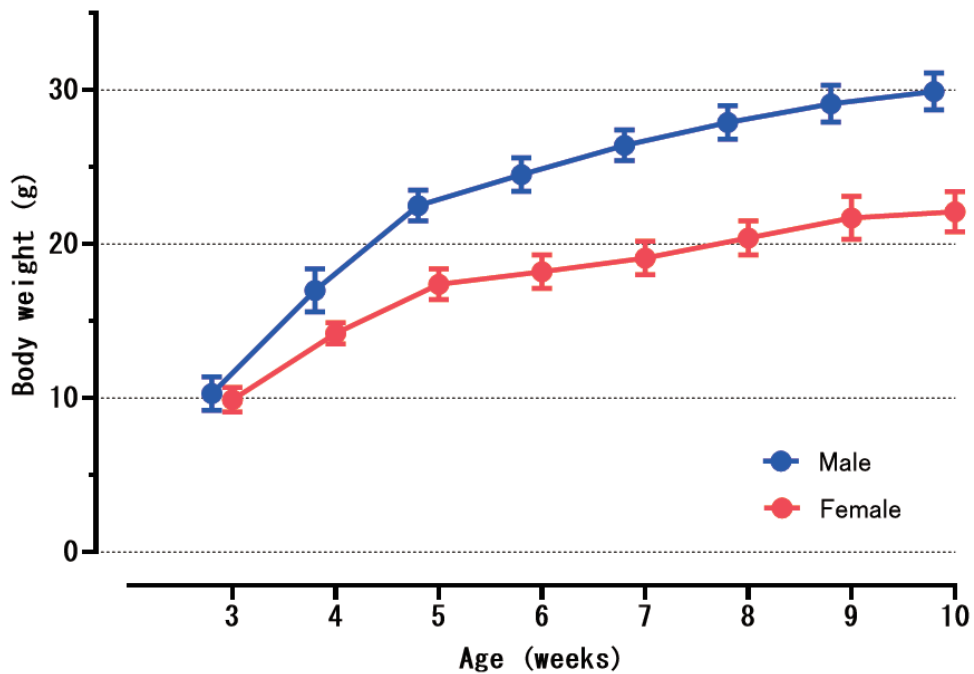
H2^d



由来

1980年に東京大学医科学研究所より導入

■体重曲線



		Age (weeks)							
		3	4	5	6	7	8	9	10
Male (n=20)	Mean (g)	10.3	17.0	22.5	24.5	26.4	27.9	29.1	29.9
	S.D.	1.1	1.4	1.0	1.1	1.0	1.1	1.2	1.2
Female (n=20)	Mean (g)	9.9	14.2	17.4	18.2	19.1	20.4	21.7	22.1
	S.D.	0.8	0.7	1.0	1.1	1.1	1.1	1.4	1.3

飼料:FR-1 (フナバシファーム)

■血液学的検査

Items	Unit	Male	Female
		10 weeks n=10	10 weeks n=10
WBC	× 10 ² /μL	76.9 ± 24.5	68.6 ± 20.1
RBC	× 10 ⁴ /μL	1001.5 ± 23.6	943.1 ± 36.6
HGB	g/dL	14.7 ± 0.4	13.7 ± 0.6
HCT	%	49.3 ± 1.0	46.2 ± 1.9
MCV	fL	49.3 ± 0.7	48.9 ± 0.3
MCH	pg	14.6 ± 0.2	14.5 ± 0.1
MCHC	g/dL	29.8 ± 0.4	29.7 ± 0.4
PLT	× 10 ⁴ /μL	140.5 ± 15.0	114.5 ± 7.6

Values are mean ± S.D.
飼料:FR-1 (フナバシファーム)

■血液生化学的検査

Items	Unit	Male	Female
		10 weeks n=10	10 weeks n=10
AST	U/L	54.3 ± 9.7	55.5 ± 19.1
ALT	U/L	28.8 ± 4.8	24.8 ± 8.3
ALP	U/L	264.3 ± 22.5	364.3 ± 36.8
ALB	g/dL	3.1 ± 0.2	3.3 ± 0.2
TP	g/dL	4.8 ± 0.3	4.5 ± 0.2
A/G		1.9 ± 0.1	2.5 ± 0.2
GLU	mg/dL	133.1 ± 10.2	119.9 ± 20.6
T-BIL	mg/dL	0.09 ± 0.02	0.07 ± 0.02
T-CHO	mg/dL	77.8 ± 5.9	66.2 ± 7.9
TG	mg/dL	53.6 ± 11.4	45.2 ± 11.8
PL	mg/dL	170.5 ± 12.2	139.7 ± 15.5
Ca	mg/dL	9.2 ± 0.1	9.0 ± 0.1
IP	mg/dL	7.4 ± 0.6	6.7 ± 0.6
BUN	mg/dL	26.8 ± 2.8	23.4 ± 2.2
CRE	mg/dL	0.11 ± 0.01	0.11 ± 0.02
Na	mEq/L	152.2 ± 1.0	151.1 ± 1.6
K	mEq/L	5.0 ± 0.2	4.7 ± 0.4
Cl	mEq/L	113.6 ± 0.8	112.2 ± 1.6

Values are mean ± S.D.
飼料:FR-1 (フナバシファーム)

■器官重量

Items	Unit	Male	Female
		10 weeks n=10	10 weeks n=10
Body weight	g	25.8 ± 1.3	18.9 ± 1.7
Absolute organ weight			
Brain	g	0.428 ± 0.013	0.437 ± 0.017
Heart	g	0.122 ± 0.008	0.099 ± 0.013
Lung	g	0.145 ± 0.010	0.128 ± 0.014
Kidney (L)	g	0.189 ± 0.015	0.137 ± 0.016
(R)	g	0.199 ± 0.012	0.151 ± 0.011
Spleen	g	0.078 ± 0.008	0.074 ± 0.011
Liver	g	0.990 ± 0.075	0.735 ± 0.132
Testis (L)	g	0.074 ± 0.007	
(R)	g	0.076 ± 0.008	
Ovary (L)	mg		3.5 ± 1.2
(R)	mg		3.4 ± 0.6
Uterus	g		0.058 ± 0.011
Thymus	g	0.041 ± 0.007	0.052 ± 0.009
Salivary gland (L)	g	0.075 ± 0.008	0.040 ± 0.004
(R)	g	0.074 ± 0.006	0.042 ± 0.007
Relative organ weight			
Brain	g%	1.67 ± 0.08	2.33 ± 0.18
Heart	g%	0.48 ± 0.03	0.52 ± 0.05
Lung	g%	0.56 ± 0.04	0.68 ± 0.06
Kidney (L)	g%	0.74 ± 0.05	0.72 ± 0.05
(R)	g%	0.77 ± 0.03	0.81 ± 0.06
Spleen	g%	0.30 ± 0.03	0.39 ± 0.04
Liver	g%	3.84 ± 0.15	3.87 ± 0.41
Testis (L)	g%	0.29 ± 0.03	
(R)	g%	0.30 ± 0.03	
Ovary (L)	mg%		18.64 ± 5.79
(R)	mg%		17.97 ± 3.58
Uterus	g%		0.30 ± 0.05
Thymus	g%	0.16 ± 0.03	0.28 ± 0.04
Salivary gland (L)	g%	0.29 ± 0.03	0.21 ± 0.02
(R)	g%	0.29 ± 0.02	0.23 ± 0.04

Values are mean ± S.D.
飼料:FR-1 (フナバシファーム)